



Endo-Eze™ MTAFlow™ White

MINERAL TRIOXIDE AGGREGATE REPAIR CEMENT



new



- Has bioactive apatite-forming properties²
- Mixes into a smooth consistency
- Resists washout
- Can be delivered with 29 ga NaviTip™ tip depending on consistency
- Predictable quick setting
- Has an adaptable mixing ratio based on procedure
- Now available in white nonstaining formula

Endo-Eze MTAFlow White mineral trioxide aggregate repair cement is designed to mix and deliver easily with your desired consistency. When using the NaviTip 29 ga tip you're assured precise placement for apexification, apical plug, resorption, and perforation. MTAFlow White repair cement is ideal for use above the clinical margin because it contains a radiopacity agent that is nonstaining—it will not be visible in the esthetic zone of the tooth.

"MTA cement is a bioactive material. The formation of hydroxyapatite (HA) will cover the surface of the MTA exposed to body fluids, and that layer of HA will no longer look like a foreign material to the living cells. Therefore, the MTA will support healing."³

Warning: MTA has limited antimicrobial properties. When MTAFlow cement is used in primary dentition vital pulpotomy, use only sterile water during the procedure.

1. realityesthetics.com. 2. Guimaraes, B. et al. Chemical-physical properties and apatite-forming ability of mineral trioxide aggregate flow. *J Endod.* 2017; 43: 1692-96 3. Sarkar NK, Caicedo R, Ritwik P, et al. Physicochemical basis of the biologic properties of mineral trioxide aggregate. *J Endod.* 2005;31(2):97-100.

THE DIFFERENCE YOU CAN FEEL

MTAFlow White repair cement has a smooth consistency due to the ultrafine powder and proprietary gel medium. The formulation is resistant to washout, which helps to ensure that the mixture stays right where you place it. Plus, it can be delivered using Ultradent's syringes and tips, ensuring precise placement for effective treatment.



1. Use a cement spatula to remove excess powder. **DO NOT** use powder without leveling at edge of scoop.



2. Shake from top to bottom 3 times. Make sure that gel is in tip end of bottle before expressing.



3. After mixing, load the mixed MTAFlow White cement into back of clear Skini syringe.



4. Insert the plunger and express a small amount of material through the tip.

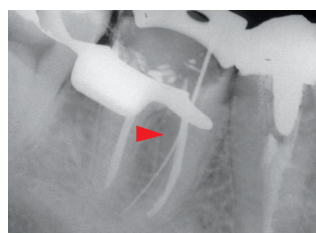


5. Mixed Endo-Eze MTAFlow White cement inside syringe will be usable for up to 15 minutes.

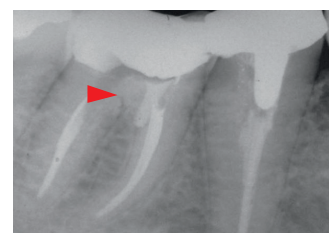


6. Use thin consistency and a NaviTip™ 29 ga tip to deliver MTAFlow White cement inside canal.

After 5 minutes you can lightly rinse and air dry the area and it will not dislodge the MTAFlow White cement. MTAFlow White cement, mixed and placed inside the Skini syringe, can be used for up to 15 minutes after mixing. Full setting is one hour. Complete cure and strengthening is 4 weeks.



Perforation located in cervical third of mesial buccal canal.



MTA cement in place showing repair.



THE RIGHT CONSISTENCY FOR THE RIGHT PROCEDURE

The mixing ratio of the powder and gel components of MTAFlow White repair cement is adaptable based on the procedure. MTAFlow White cement's nonstaining formula is specifically designed to be used for procedures like primary dentition vital pulpotomy and pulp capping. After placing MTAFlow White repair cement, allow initial set time of 5 minutes, then cover with UltraBlend™ plus liner and restore.

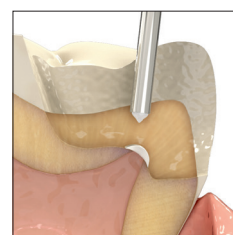
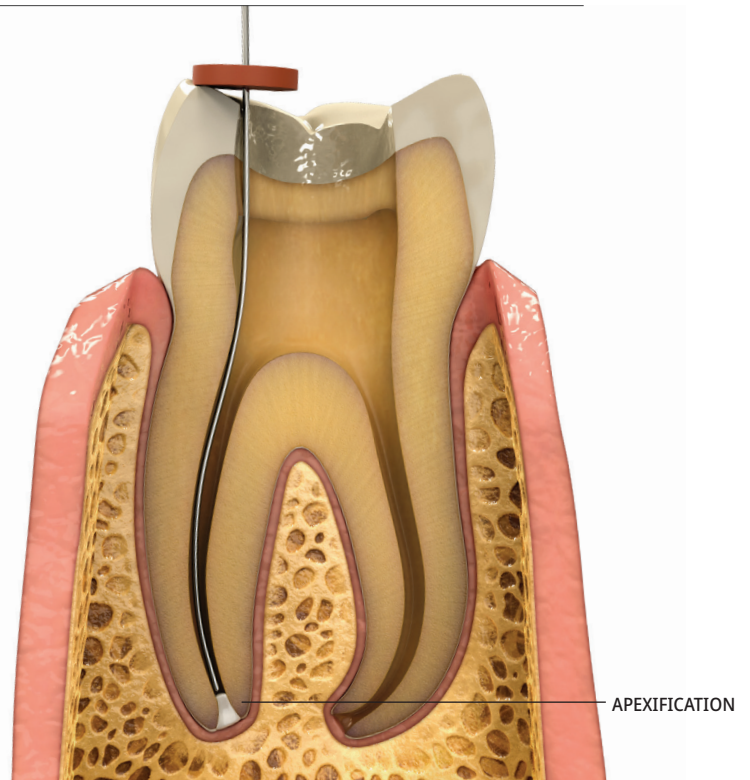
Whatever consistency you need, you can be sure MTAFlow White repair cement will be effective, non-gritty, and easy to deliver accurately. More gel or powder may be added at any time during mixing to achieve the desired consistency.

MIXING PROPORTION SUGGESTIONS (POWDER AND GEL)*

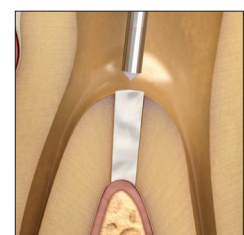
Applications	Pulp Capping, Pulp Chamber Perforation, Primary Dentition Vital Pulpotomy	Resorption, Apexification, Apical Plug	Root End Filling
Powder (Measuring Spoon)	2 big ends (0.26 g)	1 big end plus 1 small end (0.19 g)	1 big end plus 1 small end (0.19 g)
Gel Drops	3 drops	3 drops	1 drop**
Consistency	Thick	Thin	Putty
Delivery Tip	Micro 20 ga tip	NaviTip 29 ga tip	Non-syringe delivery

* More powder or gel can be added to achieve desired consistency.

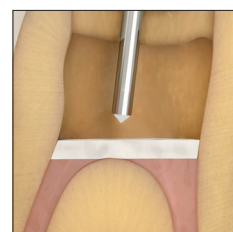
** Depends on the desired consistency.



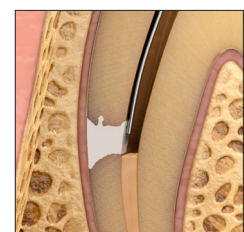
PULP CAPPING



PULP CHAMBER FLOOR PERFORATION



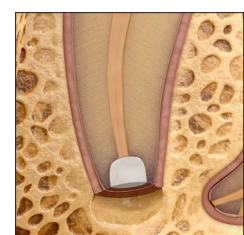
PRIMARY DENTITION VITAL PULPOTOMY



RESORPTION



APICAL PLUG



ROOT END FILLING

EVERYTHING YOU NEED IN ONE PLACE

MTAFlow White repair cement kits come with the essential tools you'll need to mix and deliver cement. The kits contain enough MTA powder and gel to complete 8–10 applications.

new



4980 - MTAFlow White Repair Cement Kit

- 1 x Each Technique guide, instructions for use, 2 g MTAFlow powder, 2 ml MTAFlow gel, measuring spoon, and mixing pad
- 10 x Skini syringes
- 10 x Luer Lock caps
- 20 x Micro 20 ga tips